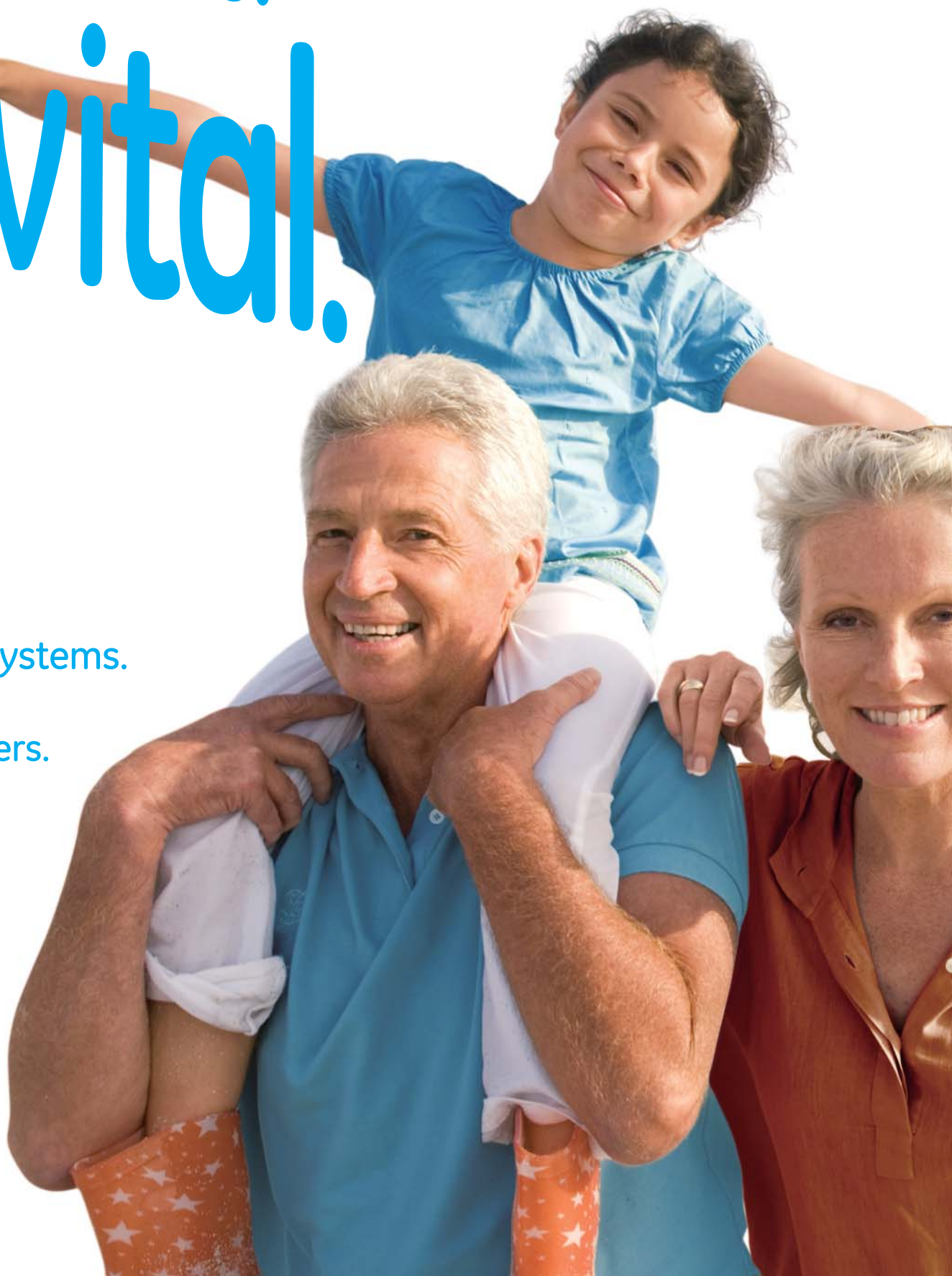


GE Healthcare

Healthy future. It's vital.

Lunar iDXA* systems.
A clear choice
in densitometers.



See more. Know more.

Research-grade analysis helps you manage patients with confidence.

In your search for answers to a patient's health concerns, information is everything. And with Lunar iDXA*, GE Healthcare offers our most advanced system to provide the data and images you need. Whether you're assessing bone density, fracture risk, metabolic health, or pediatric development, Lunar iDXA gives you a clear view inside the body.

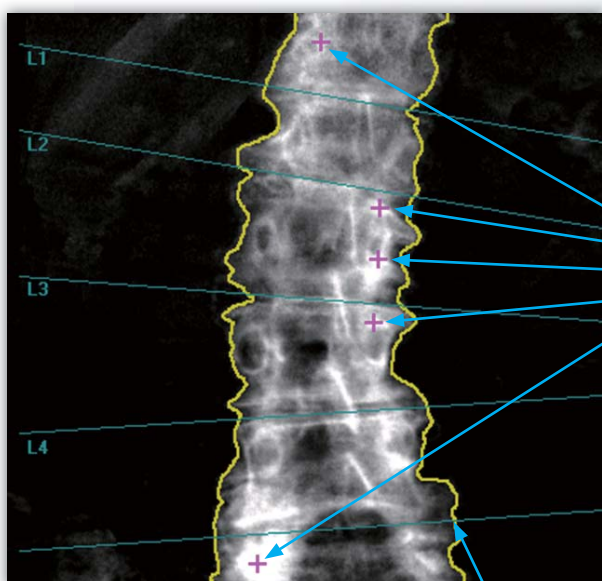
Lunar iDXA offers research-grade image resolution and exacting precision, designed to provide you a high degree of clinical confidence across all body types. Consider Lunar iDXA not only for today's imaging needs but also as an enduring platform for the future.



Lunar iDXA provides research-grade whole body assessment across a broad range of patient sizes and conditions.

Exceptional capabilities.

Details make the difference in your practice—and that's where Lunar iDXA excels. It puts exceptional capability within reach with outstanding image resolution and precision, accommodation of obese patients, and a long list of approved applications. Lead the way with the DXA imaging system that helps you to protect the vitality of your patients and your practice.



Enhanced ability to detect unusually high density for exceptional measurement accuracy

Enhanced edge detection for outstanding accuracy and reproducibility of bone mineral density (BMD) results

Clarity

High-resolution images bring anatomy into focus.

One in four women over the age of 50 will suffer a vertebral fracture in her remaining lifetime, with severe impact on quality of life.¹ Assessment is made easy with Lunar iDXA system's extra-crisp images.

Lunar iDXA offers the latest generation of DXA technology from GE Healthcare. Its vertebral assessment is comparable to radiographs in identifying and classifying deformities concerning etiology, grade, and shape,² while using a lower dose of radiation.

Lunar iDXA helps you detect a variety of asymptomatic compression fractures.

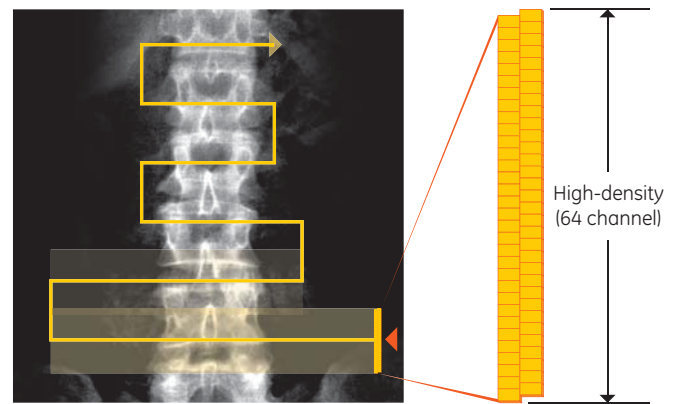


See vertebral bodies clearly with dual-energy soft tissue subtraction.

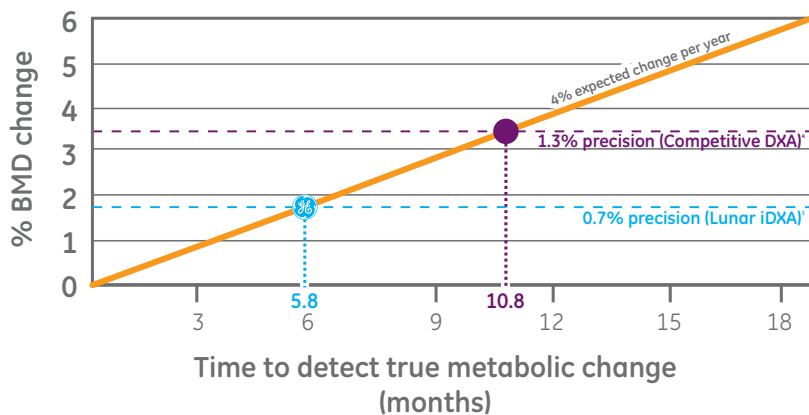
Precise measurement helps you detect small changes nearly twice as fast.

Osteoporosis treatment and other clinical interventions require time to monitor. Lunar iDXA helps with exceptional precision, due to its direct-to-digital detector plus staggered array and narrow-angle fan beam technology with Multi-View Image Reconstruction (MVIR). This corrects magnification error that is observed with competitive wide-angle fan beam systems.³

What's all this precision worth to you? It enables you to detect small and significant changes sooner, which can help motivate patient compliance, guide treatment decisions and reduce sample size required for clinical trials.



Direct-to-digital detector plus staggered array enhance precision and create high-resolution images.

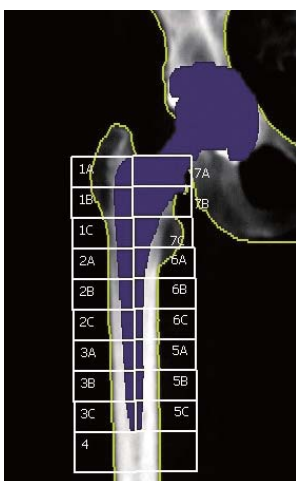


In this example, analysis shows that precision with Lunar iDXA allows clinicians to detect true metabolic change as early as 5.8 months, compared with 10.8 months for competitive equipment (95% confidence).

Versatility

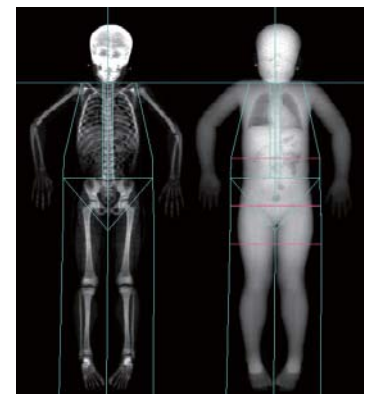
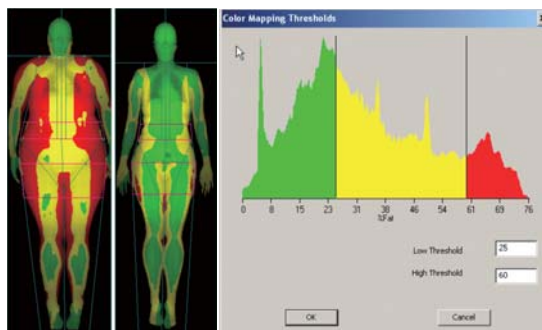
Breadth of applications and features for a wide range of patients.

A large scan window plus high weight limit and arm height on the Lunar iDXA comfortably accommodate many patient sizes and conditions. A long list of applications for Lunar iDXA—from visceral fat measurement and pediatric assessment to small animal scanning—helps explain why it's chosen by leading hospitals, clinics, and physicians around the world.



Orthopedic applications help you to assess peri-prosthetic BMD changes, including automatic prosthesis identification and Grün zone analysis.

Color Fat Mapping with adjustable thresholds to visualize fat distribution and aid metabolic health assessment.



Advanced tools help you to evaluate pediatric growth and development include automatic femoral neck ROI-sizing and total body less head measurements.



Vitality for your patients means vitality for your practice.

Your patients depend on you to identify and help manage their bone and metabolic health. In fact, your early intervention can make a lasting difference to their future.

Lunar iDXA is designed to increase your ability to serve your patients with greater understanding of their conditions. Its data and images give you foundational information on bone density, body composition, and pediatric development. It's a clear, reliable resource for your DXA needs, today and tomorrow.

Contact your GE Healthcare representative for more information on Lunar iDXA.

¹International Osteoporosis Foundation. *The Breaking Spine*. 2010:4.

²Armbrecht G, Felsenberg D. Diagnostic of vertebral deformities: Comparison of VFA (GE iDXA) to conventional radiographs. *ASBMR* 2009.

³iDXA precision (Total Femur BMD). Ergun DL, Wacker WK, Zhou QQ, et al. Performance of the Lunar iDXA. Presented at the 17th International Bone Densitometry Workshop, Kyoto, Japan, November 2006.

⁴Hologic Delphi precision (Total Left Hip BMD). Shepherd JA, Fan B, Lu Y, et al. Comparison of BMD precision for Prodigy and Delphi spine and femur scans. *Osteoporos Int*. 2006;17:1303-1308.

**Lunar Product Division Americas
GE Healthcare Lunar
Global Headquarters**

P.O. Box 7550
Madison, WI 53707-7550
T: +1-800-535-7339
F: +1-608-223-2482

**Lunar Product Division
Europe, Middle-East & Africa
GE Healthcare Lunar**

Kouterveldstraat 20
B-1831 Diegem, Belgium
T: +32-2-7197217
F: +32-2-7197359

**Lunar Densitometry
Asia & Pacific Headquarters
GE Healthcare Lunar**

3/F GE China Technology Park
No. 1 Hua Tuo Road
Shanghai 201203, China
T: +86-21-38777888 (Ext. 60128 or 60480)
F: +86-21-38777451

About GE Healthcare

GE Healthcare provides transformational medical technologies and services that are shaping a new age of patient care. Our broad expertise in medical imaging and information technologies, medical diagnostics, patient monitoring systems, drug discovery, biopharmaceutical manufacturing technologies, performance improvement and performance solutions services helps our customers to deliver better care to more people around the world at a lower cost. In addition, we partner with healthcare leaders, striving to leverage the global policy change necessary to implement a successful shift to sustainable healthcare systems.

Our “healthymagination” vision for the future invites the world to join us on our journey as we continuously develop innovations focused on reducing costs, increasing access and improving quality around the world. Headquartered in the United Kingdom, GE Healthcare is a unit of General Electric Company (NYSE: GE). Worldwide, GE Healthcare employees are committed to serving healthcare professionals and their patients in more than 100 countries. For more information about GE Healthcare, visit our website at www.gehealthcare.com.

©2012 General Electric Company – All rights reserved.

GE and GE Monogram are trademarks of General Electric Company.

*Trademark of General Electric Company.

GE Healthcare, a division of General Electric Company

www.gehealthcare.com



imagination at work

BMD-0146-04.12-EN-US