

The new  
LOGIQ™ e Ultrasound  
Simpler. Faster. Even more precise.



GE HealthCare

From anesthesiology to musculoskeletal to rheumatology and beyond, LOGIQ e is the next generation of **simple, fast, precise imaging** in a portable laptop design that knows no boundaries.



# Even better by your side.

The new LOGIQ e brings a wave of innovation to our most versatile and robust laptop ultrasound system, further improving the time-saving benefits for both technicians and doctors. Created with you in mind, LOGIQ e advances its easy-to-use design to help you deliver confident care in even more places.

Enjoy console-grade performance inside a conveniently portable laptop that will meet your everyday, all-day scanning needs. It's easily cleanable, noticeably quieter, outfitted with a larger screen, and offers both trackpad and trackball functionality. In other words, it's the one Point of Care Ultrasound (POCUS) that covers all your bases.





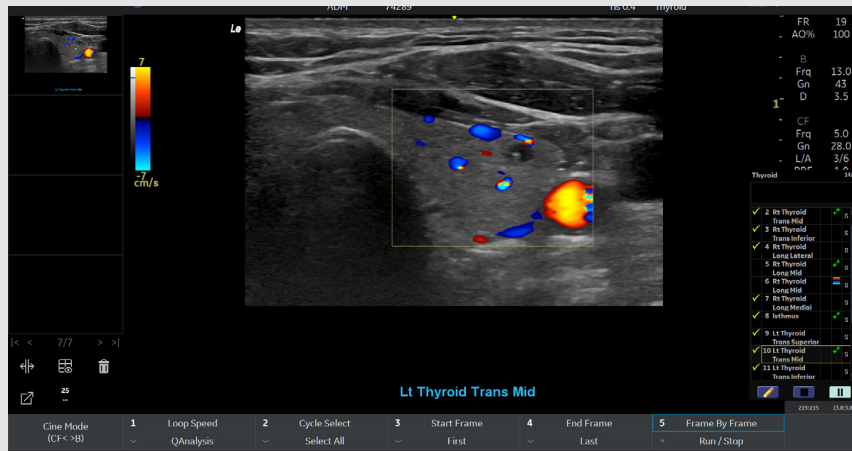
# Broader Capabilities. Greater Usability.

LOGIQ e offers key improvements to further expand its convenience and utility.



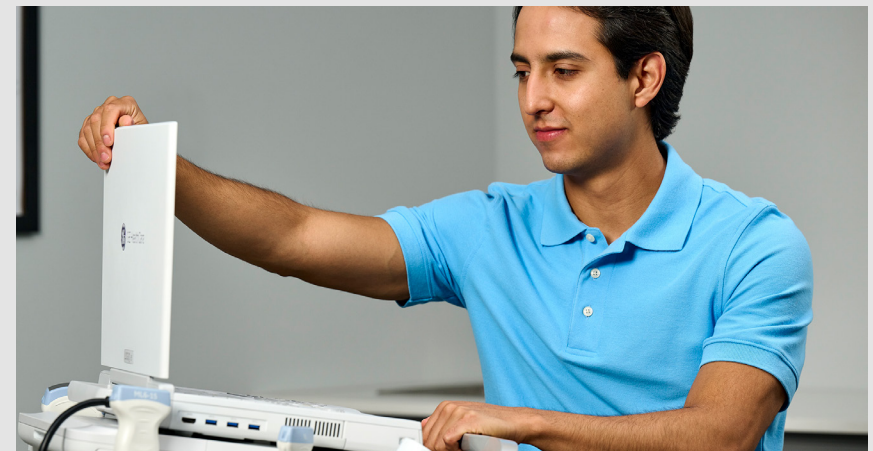
## New probes

Expanding the selection with the specialized L4-20t-RS high-frequency button probe, and the 12S-RS cardiac probe



## New clinical tools

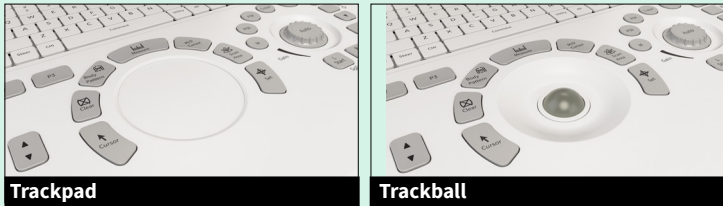
Such as Scan Assistant and Strain Elastography



## Digital footprint

Addition of on device eDelivery, Probe Check, and Imaging Insight support.  
*For further information on these features, see pages 16*

# Broader Capabilities. Greater Usability.

Compare Feature	New Model	Previous Model
Portability	Laptop style unit detaches from cart	Laptop style unit detaches from cart
Battery life (scan time)	~90min (two batteries); 4.5 hours on cart	Extended life battery option available
Monitor size	15.6" (39.624 cm) LCD	15" (38.1 cm)
Active probe ports	1 (standard), 3 w/ cart	1 (standard), 3 w/ cart
Footprint of cart	20.1" (510.54 mm) wide x 20.1" (510.54mm) deep	21.3" (541.02 mm) wide x 20.1" (510.54 mm) deep
Weight of unit (off cart)	4.5 kg (9.92 lbs)	5.2 kg (11.5 lbs)
User interface	Sealed keyboard with trackpad/trackball options 	Keyboard with trackball
AI-enabled	No	No
Operating system	Microsoft® Windows® 10	Microsoft® Windows® 10
Connectivity	DICOM® 3.0 Connectivity/Encrypted DICOM	DICOM® 3.0 Connectivity/Encrypted DICOM
Warranty	*Varies by region	*Varies by region
Training included	*Varies by region	*Varies by region

# You asked. We delivered.

- Simplified keyboard
- Larger screen (15.6")(39.624 cm) with improved resolution
- Sealed keyboard option, with trackpad option
- Ultra-quiet fan
- Longer battery life
- Extended probe selection
  - Sleek, cutting-edge design
    - Small footprint
    - Lightweight

Extensive family of  
transducers to meet  
your clinical needs



**Simpler.** Faster. More Precise.

# Simpler

# Your work can be complicated. So we made LOGIQ e **Simpler.**

LOGIQ e's specialized software and transducers help you keep up with treatment advances and simplify interventions. The updated design is both ergonomic and functional for easy connectivity and operation.



### Single Cart, Ergonomic Design

Reduced base dimensions to roll where you need it, with more room to rest wrists during exams. New trackpad and button probe for more accuracy and menu access with a simple click. Rotary key kept close to trackpad to reduce hand movement.



### Longer Battery Life

Improved battery technology lasts for 90 minutes between charges and up to 300 battery cycles.



### Simple consistency

Follow-up Tool with Fusion helps ensure technical consistency from exam to exam to help prevent clinical conclusions from being clouded by inconsistent technique.



### Lightweight

Lighter than previous versions for greater maneuverability. Without the battery, LOGIQ e weighs 4.5 kg (9.92 lbs) compared to the 5.2 kg (11.5 lbs) of previous models.



### Sealed, Simple Keyboard with Trackpad Option

Simple, sealed design for easier cleaning and simplified functionality. Nothing extraneous here. Just the essentials for easy, efficient scanning—including sealed digital TGCs.



### Simultaneous Split Screen

Sometimes comparing left-to-right or before-and-after is helpful in clinical decision-making.



### Virtual Convex

Provides a wide field of view so you can visualize larger anatomy structures in a single scan. It also aims to enhance image quality on linear probes.



### LOGIQ View

Allows a full, panoramic view and scans up to 60cm (23.62") of anatomy while performing key measurements.



### The Simplicity of a Number

PDI quantification provides a numeric representation of the blood flow that may be associated with inflammation, tumors, and synovitis.



Simpler. **Faster.** More Precise.

# Faster

# We've made scanning **Faster**, giving you more time for your patients.

LOGIQ e was built to help make healthcare professionals even faster at performing scans. The highly portable system easily moves from patient to patient, anywhere around your healthcare with no bulky cart to manage. It also offers immediate access to depth, gain, and focal position, keeping up with the needs of today's technicians.



## Improved dexterity

System controls conveniently placed directly on the Button Probe L4-20t-RS allow a single operator to perform exams and adjust image simultaneously.



## Auto EF

For accurate, instant, and rapidly calculating results.



## Handle

Ergonomic onboard cart handle for greater stability and freedom of movement.



## Scan Assistant

New intuitive Scan Assistant makes quick work of tedious tasks to keep you focused on providing the best care.



## MP4

Allows you to save images in this format and to review the images easily on your computer or phone.



## Wheels

Quickly lock and unlock cart mobility with a simple tap of the foot.



## eDelivery direct to device, Probe Check, Imaging Insight

These Digital Services Solutions allow you to focus on operational efficiency, clinical excellence and financial growth.



## Intuitive

Get up to speed and operational quickly with everything you need directly on the keyboard, making it ideal for users of all capability levels.



## Easy Cleaning

Simply wipe down the entire device for quick, effective cleaning in between scans.

Simpler. Faster. **More Precise.**

# More Precise

# Image quality matters. So we made LOGIQ e even more precise.

As image quality continually improves, so does the precision of diagnostic, guidance, and monitoring treatments. That's why LOGIQ e incorporates advanced imaging technology to help reveal the whole story.



## Tissue differentiation matters

LOGIQ e imaging engine is separately optimized for each Point of Care application.



## See the inflammation and early disease

High-Res PDI is a GE-exclusive technology to visualize flow in neovascularization.



## Contrast imaging<sup>2</sup>

Delivers a clear picture of tissue structure and lesion vascularity by optimizing the balance between penetration and resolution for improved contrast sensitivity.

*Available with C1-5-RS, L4-12t-RS, and 12L-RS*



## Needle Visualization

LOGIQ e uses two different types of ultrasound echo processing—one for tissue and one for metal. This helps the needle stand out and allows separate control of the needle appearance.



## See in 3D

Use any transducer validated on LOGIQ e to show anatomical relationships intuitively with Easy3D.



## Center Line Control

Marks the center line on the image to help navigate precisely to the target every single time.



## Image almost the whole body— and almost any body

The C1-5-RS curved transducer provides penetration for deep structures, even on an obese patient. Other transducers image up to 22 MHz for stunning superficial detail.



## Strain Elastography<sup>1</sup>

Provides a relative measure of elasticity in a selected ROI to assist in joint inflammation staging, treatment planning, and monitoring.  
*For further detail on this feature see page 15.*



## Wider array of probes

**L4-20t-RS Probe** – Linear Array button, ultra-wide band with XDclear™ special probe is used for superficial to deep structures.

**12S-RS Probe** – High-frequency phased array sector probe designed for pediatric cardiac imaging, specific to shared services, emergency department and critical care.



# Features

Point of Care physicians  
have common goals.

## Special features for different specialties.

All POC physicians require accurate imaging for critical assessments. But different POC specialties require different functionalities to help them make quick decisions, drive fast care management, and reduce administrative burdens.

LOGIQ e is equipped with specialty-specific features to deliver simple, fast, precise imaging across anesthesiology, musculoskeletal, rheumatology, endocrinology, and vascular labs.



### **Anesthesiology**

Innovative, anesthesia-specific software and transducers help you see the needle and administer a block—even in a brightly lit room.

---



### **MSK**

Innovative, musculoskeletal-specific transducers and software help to see the source of pain, guide treatments, and monitor patient progress. The new Strain Elastography feature measures tissue stiffness.

---



### **Rheumatology**

This system delivers innovative image fusion and quantification to help bring objectivity to patient evaluation, enabling you to monitor progress in a technically consistent way as you treat to the target of remission.

---



### **Endocrinology**

Efficient, cost-effective imaging, precise flow visualization, and consistent exams enable rapid diagnostic and therapeutic decisions to empower endocrinologists with streamlined ultrasound capabilities.

---



### **Vascular Labs**

Examine the full vascular landscape to guide needles with unparalleled accuracy and efficiency while improving the patient experience by enabling users to place needles with less discomfort and bruising.

---

Now with

# Scan Assistant for consistent exams and confident results.

Provides sonographers with standardized exam protocols to guide them through all image acquisition steps, saving excessive keystrokes, reducing stress and fatigue, and maintaining exam consistency. The Scan Assistant Creator provides the flexibility to customize or create new protocols for specific exam types, such as pulmonary protocols.

- Exam consistency for both novice and experienced users
- More efficient exams with reduced keystrokes for annotations, measurements, and documentation of findings
- Automatic Mode and Preset Changes optimize scanning and minimize adjustments
- Reports prepopulate displaying detailed results for easy documentation
- Comprehensive reports can be retained to document for quality assurance



Now with

# Strain Elastography

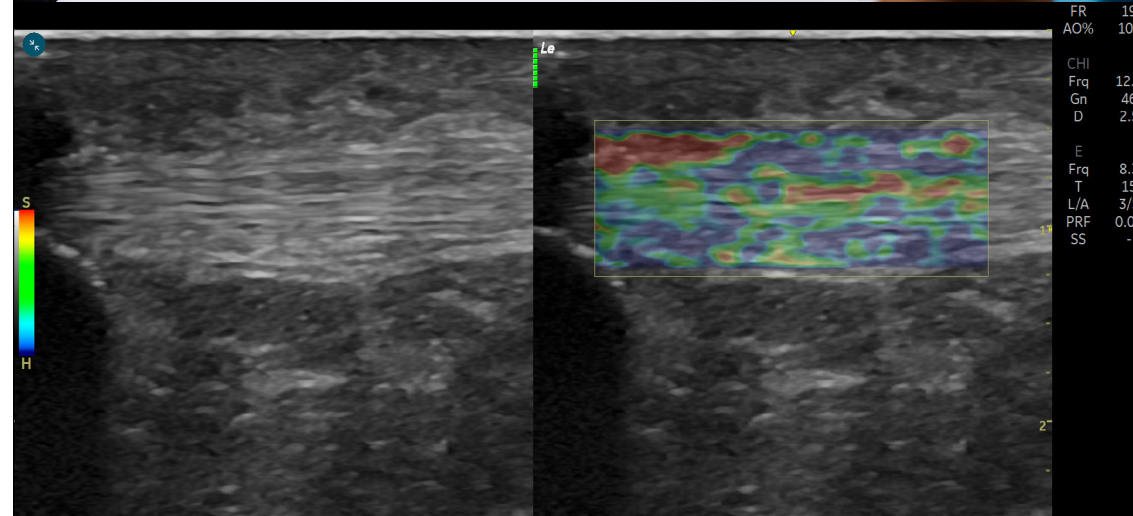
LOGIQ e Strain Elastography capabilities provide a qualitative estimate of the strain, or tissue deformation, in the region of interest after compression and displays a real-time color map of the relative elasticity, superimposed on the B-Mode image.

- High resolution, persistence and artifact control
- User selectable color and gray strain maps
- Quality bar and graph to help increase user confidence
- Dual measurements (A/B ratio)



## Musculoskeletal:

- Provide additional information for diagnosis of tendinopathy, tendinosis, synovial hypertrophy, tears, and other conditions.
- Assist in injury management from early diagnosis.





Now with

# Imaging Insights

Optimized department-level productivity

Imaging Insights for Ultrasound is an on-premise solution which brings together machine data across your hospital into powerful, intuitive dashboards. This helps you make data-driven operational and financial decisions with valuable insights and confidence.

## Monitor

Get visibility on the utilization of all your ultrasound systems

## Optimize

Improve the user/patient experience within your ultrasound modality

## Proceed

Make your clinical, operational, and financial decisions with confidence



### Operational efficiencies

Streamline workflow, increase patient volume, optimize scheduling, and reduce patient waiting times for higher staff and patient satisfaction.



### Quality of care

Identify variations in protocol, manage dose, identify variations in practices and training opportunities to drive clinical excellence and compliance.



### Financial growth

Identify referral increase opportunities and asset mix optimization opportunities to attract more patients and referrals.



Products mentioned in the material may be subject to government regulations and may not be available in all countries. Shipment and effective sale can only occur after approval from the regulator. Please check with local GE HealthCare representative for details. LOGIQ is a trademark of GE HealthCare. GE and the GE monogram are trademarks of General Electric Company used under trademark license. ©2024 GE HealthCare.

JB25454XX